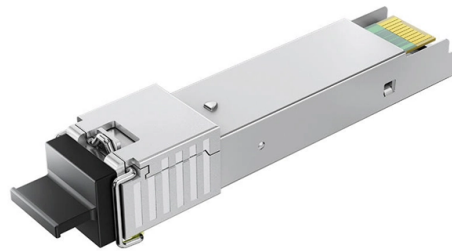


What is an optical fiber terminal optical cable



Overview

A fiber-optic cable, also known as an optical-fiber cable, is an assembly similar to an electrical cable but containing one or more optical fibers that are used to carry light. The optical fiber elements are typically individually coated with plastic layers and contained in a protective tube. Here is the physical reality of how ONTs work, the difference between bridge and gateway units, and what exactly happens inside that plastic box on the wall. What is ONT?

(The “Fiber Modem”) People call the ONT a “magic box” or a “ fiber modem. ” It isn't magic, and it technically isn't a modem. ONT is an interface between the Internet Service Provider (ISP) and the end user of fiber Internet. An ONT is a device that translates light signals sent through fiber optic cables into data that your devices can understand and use. If the household has previously received. An optical network terminal is a device that connects a customer's premises to an optical network.



Article Content

FCST022113 Fiber Access Terminal Closure – IP68 FTTX

Product Overview FCST022113 Fiber Access Terminal Closure is a compact FTTX termination point designed for feeder cable to drop cable connection in FTTH, FTTB, and other fiber networks. It

What Is an Optical Network Terminal? A Simple Guide

Think of it as a simple handoff. The ONT's job is to bring the internet into your home by translating the light signals from the fiber optic cable into an

What Is An ONT & How is it Used in Fiber Networks?

The ONT – Optical Network Terminal (also known as the modem) is connected to the Termination Point (TP) via an optical fiber cable. Using an Ethernet cable, it connects to your router

What is ONT? The Engineer's Guide to Optical Terminals

An ONT requires two main cables: A fiber optic drop cable (usually with a green SC/APC connector) brings the light signal into the device, and a standard copper Ethernet cable sends the electrical

What is an Optical Terminal Network and Why Do I

You'll typically find an Optical Network Terminal (ONT), or fiber box, in a central part of your home, like on the outside of your home, in your garage or

Fiber Optic Connector Types: A Beginners Guide

The fiber connector types, sometimes referred to as terminations, link fiber optic cables together through terminals, switches, adapters, and patch

Amazon : Fiber Optic Cable Repair Kit

1-48 of 249 results for "fiber optic cable repair kit" Results Check each product page for other buying options.

What Does an Optical Network Terminal Look Like?

The Optical Network Terminal is a piece of equipment fundamental to Fiber-to-the-Home (FTTH) internet services. It's the point at which the fiber optic cable, delivering data as light, connects

Fiber to the x

Fiber to the premises (FTTP) is a form of fiber-optic communication delivery in which an optical fiber is run in an optical distribution network from the central office all

What Is an ONT & How Is It Used in Fiber Networks?

ONT stands for Optical Network Terminal. An ONT is a device that translates light signals sent through fiber optic cables into data that your devices can understand

Huawei fiber optic terminal box-AliExpress

The Huawei Fiber Optic Terminal Box is a reliable device for terminating and managing fiber optic cables in FTTH networks, offering compatibility, secure cable management, and support for various adapter

OM1 vs OM2 vs OM3 vs OM4 vs OM5 Multimode Fiber

Compare OM1, OM2, OM3, OM4, and OM5 multimode fiber specs, distances, bandwidth, and applications. Essential guide for data center fiber

Fiber Optic Cables

Fiber Optic Cables, Adaptors, & Accessories Our extensive offering of fiber optic cables, connectors, cassettes, enclosures, patch cords, cable assemblies, cable

What is an optical network terminal (ONT)?

An optical network terminal is a device that connects a customer's premises to an optical network. Learn all about ONTs, how they work, and why

Optical line termination

Optical line termination An Alcatel-Lucent OLT used by the French operator CityPlay OLT and ONU in fiber optic network An optical line termination (OLT), also called an optical line terminal, is a device

G.657.A2 Bend-Insensitive Single-Mode Optical Fiber

Explore G.657.A2 bend-insensitive single-mode optical fiber for FTTH, dense indoor routing, compact terminal boxes, and drone fiber or FPV tether systems. Learn key specs, bend performance,

Fiber vs. Cable Internet 101: The Best Tips | Dong Knows Tech

Tip There is no such thing as the “best” routers or Wi-Fi systems for a particular Internet service provider or type—Fiber-optic,

Do You Need a Modem for Fiber Internet?

Fiber Internet Hardware: Quick Answer Fiber internet does not use a traditional cable modem. Instead, it requires an Optical Network Terminal (ONT)

What is Optical Network Terminals (ONT)?

At its most fundamental level, an Optical Network Terminal (ONT) is a specialized device that serves as the endpoint of your fiber internet connection within your

Optical Fiber | Optical Fiber Products | Corning

Optical fiber broadband brings together a culture of innovation, quality, and manufacturing excellence to create life-changing products.

Fiber optic drone

Fiber optic drone Ukrainian FPV drone unspooling the fiber optic cable. Ukrainian FPV drone with fiber-optic communication channel A fiber optic drone is an

Nvidia Inks \$500 Million Deal With Fiber-Optic Maker Corning

Nvidia Corp. bought \$500 million worth of rights for shares in the fiber-optic cable maker Corning Inc. as part of a broader partnership between the two companies aimed at expanding

FIBER OPTIC TERMINATION BOX, TERMINAL BOX 2 PORT With

Product details FIBER OPTIC TERMINATION BOX 2 PORT is an essential device for managing optical fiber connections, providing functionality for fusion splicing, splitting, and wiring transmission. This

How to Check If Your Address Is Fiber-Ready (Tools

Check if your house is fiber-ready with provider websites, locator tools, and physical signs like an Optical Network Terminal (ONT).

What Is an ONT and How It Works in Fiber Networks

Learn what an ONT (Optical Network Terminal) is, how it works, and why it's essential for fiber internet. Includes setup tips and troubleshooting.

Single-mode optical fiber

In fiber-optic communication, a single-mode optical fiber, also known as fundamental- or mono-mode, is an optical fiber designed to carry only a single

Contact Us

For more information, pricing, or custom solutions, please contact us:

Website: <https://saastisfy.fr>

Email: sales@saastisfy.fr

Phone: +33 6 52 81 47 39

Address: 75 Rue de Rivoli, 75001 Paris, France

This document is for informational purposes only. Specifications subject to change without notice.

