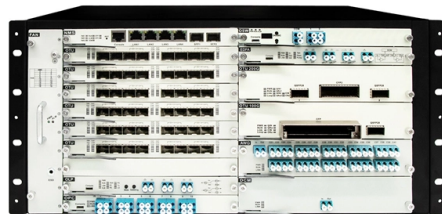


Selection Standards for Household Distribution Boxes



Overview

IEC 60670-1:2024 applies to boxes, enclosures and parts of enclosures (hereafter called "boxes" and "enclosures") for electrical accessories with a rated voltage not exceeding 1 000 V AC and 1 500 V DC intended for household or similar fixed electrical installations, either indoors. IEC 60670-1:2024 applies to boxes, enclosures and parts of enclosures (hereafter called "boxes" and "enclosures") for electrical accessories with a rated voltage not exceeding 1 000 V AC and 1 500 V DC intended for household or similar fixed electrical installations, either indoors. Main Switch: This is the primary control point for the entire electrical system, allowing the entire system to be shut down quickly in an emergency or for maintenance. Room Socket Circuits (X): By having separate circuits for each room, electrical issues can be isolated, preventing them from. Finally, choose safety devices like RCBOs and Surge Protection Devices (SPD) for the best protection against faults and lightning. Let us look at the details of choosing the right box for your house. What is a Distribution Box, Consumer Unit, and Electrical Panel?

Many people feel confused by. A Distribution Box serves as a fully enclosed, highly robust mechanical housing designed specifically to route electrical power safely from the main supply line to individual subsidiary circuits. Prefabricated Rail Terminals and Rails The CHINT DB4-Series. This guide provides information on how to select the appropriate Distribution Box for Electric project.

Article Content

"Guidelines for Household Distribution Box Specifications and ...

Installing a household distribution box requires careful attention to specifications and safety guidelines. Understanding these parameters is vital for ensuring the safety and efficiency of

How to Choose a Home Distribution Box – Expert Guide

Learn how to choose the right home distribution box with our expert guide. Compare circuit capacity, IP ratings, breaker types & avoid common mistakes.

Understanding Distribution Boxes: A Comprehensive

A distribution box, also known as a power distribution box or electrical distribution box, is used to distribute electrical power safely to multiple

Standard Electrical Enclosure Sizes: Chart, Dimensions

There is no single global standard chart for electrical enclosure sizes, but most manufacturers follow common size families based on mounting style

12 types of distribution boxes and how to choose them

How to Choose the Right Distribution Box: Your Step-by-Step Guide So, you've seen the options—now what? Choosing the best distribution box isn't rocket science, but it does need a bit of thought. I'll

How to Choose a House Distribution Box

In this blog, we will discuss what to look for when choosing a house distribution box, common errors to avoid, and essential installation recommendations. So, keep reading!

1.An Ultimate Guide for Metal Distribution Boxes

1) Metal Distribution Boxes Constructed from steel, aluminum, or cast iron, metal distribution boxes are highly durable and resistant to mechanical damage. Ideal

How to Install a Cable Distribution Box Safely and

In modern electrical systems, cable distribution boxes (also known as electrical distribution boxes or distribution boxes) play a crucial role as the

6 key points on how to choose a distribution box

In this article, we will briefly outline the seven most important points for the choice of distribution boxes based on actual needs, professional standards, and purchasing experience, so you can make smart

IEC 60670-1:2024

IEC 60670-1:2024 applies to boxes, enclosures and parts of enclosures (hereafter called "boxes" and "enclosures") for electrical accessories

How to Choose a House Distribution Box

Moreover, these standards ensure the power system is working appropriately. c) Ensure the box is accessible and well-ventilated You should always remember to keep the Distribution Box

The Complete Guide to Distribution Box: Installation, Types & More

Consult with qualified electrical professionals to ensure your distribution boxes meet current standards and can accommodate future needs. Your proactive approach to electrical

How to Choose a House Distribution Box

This article guides you through selecting a distribution box that is both affordable and safe, emphasizing key features, configuration, and practical considerations.

Distribution Box and Selection Guide

This guide provides information on how to select the appropriate Distribution Box for Electric project. If you have any questions about distribution

Design requirements and standards for low voltage

Key Takeaways Always prioritize safety by following NEC and IEC standards for low voltage distribution boxes. Check voltage and current ratings

Key Material Requirements for Distribution Box

The key material requirements for distribution box are used in constructing an electrical distribution box play a crucial role in its durability,

How to Choose the Right Distribution Box for Your Home or Workshop

Learn how to choose the right distribution box for your home or workshop. Discover sizing rules, component selection, and strict electrical safety standards.

Product Guide | How to Choose the Right Home Distribution Box? A ...

At Lianxinda, we've helped thousands of families choose the right home electrical boxes for over a decade. Here's a simple breakdown to make your decision stress-free.

Distribution boards components

Distribution boards (generally only one in residential premises) usually include the meter (s) and in some cases (notably where the supply utilities impose a TT earthing system and/or tariff

6 key points on how to choose a distribution box

6 key points on how to choose a distribution box Distribution boxes are also known as the “commander” of household circuits, with primary duties of power distribution and security protection. But when

How to Choose a House Distribution Box | CHINT Saudi Arabia

A well-chosen distribution box ensures the safety and efficiency of your household electrical system. This article guides you through selecting a distribution box.

Contact Us

For more information, pricing, or custom solutions, please contact us:

Website: <https://saastisfy.fr>

Email: sales@saastisfy.fr

Phone: +33 6 52 81 47 39

Address: 75 Rue de Rivoli, 75001 Paris, France

This document is for informational purposes only. Specifications subject to change without notice.

