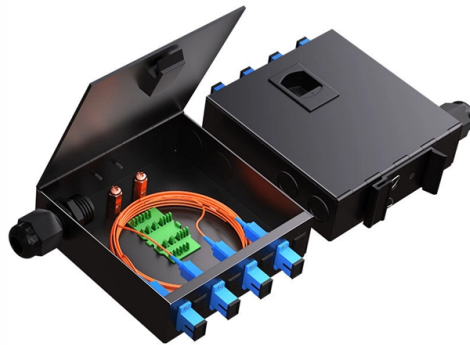


# Outdoor Explosion-Proof Distribution Box Lighting Standards



## Overview

Explosion-proof, low-glare lighting designed for classified zones and their surroundings. We map Zone/Class boundaries and design to EN 12464-2 for outdoor work areas, EN 13201 / IES RP-8 for roads and yards, IES G-1 for CCTV recognition, and BUG TM-15 to limit glare and spill. They represent a meaningful tightening of requirements across multiple certification frameworks, and facilities operating in hazardous environments need to understand what's coming. Customizable configuration of operators, cable entry quantities and cable gland types as per specification. The enclosure series EJB forms the optimal basis for the application-specific configuration of terminal boxes, control stations as well as. Crouse-Hinds series AGP17 ATEX and IECEx explosion-protected distribution boards and control assembly are designed for MCB distribution of lighting circuits, heating circuits, socket distribution and control circuits in Zone 1, 2, 21 and 22 hazardous areas. The AGP17 is ideal for areas where. R.



## Article Content

Explosion protective components & systems | Products | ABB

From its global facilities ABB manufactures a wide range of ATEX, IECEx, UL, CSA approved electrical products for hazardous area applications. These include cable glands and lighting ranges.

AGP17 ATEX and IECEx Explosion-protected Distribution Boards

AGP17 ATEX and IECEx explosion-protected distribution boards are designed for MCB distribution of lighting circuits, heating circuits and socket distribution in Zone 1, 2, 21 and 22 hazardous areas.

Control panels | Distribution boards | Ex | Ex d | Ex de | ATEX ...

With our in-depth expertise and many years of experience, R. STAHL is the perfect partner for explosion-protected power distribution in any instrumentation and control engineering, battery

WHITE PAPER on Explosion Proof and Intrinsic Safety Solutions

Care should be taken when designing an explosion-proof motor, especially when installed outdoors and on intermittent duty. The selection of the right breather and drain is very important.

Hazardous Area Lighting | Explosion-Proof, Low-Glare, CCTV-Ready

Explosion-proof, low-glare lighting designed for classified zones and their surroundings. We map Zone/Class boundaries and design to EN 12464-2 for outdoor work areas, EN 13201 / IES RP-8 for

Flameproof Distribution Board | Explosion proof

An ordinary distribution board may generate heat and sparks due to heavy usage. Thus, the flameproof/explosion-proof distribution box/panel is used in hazardous

Control Panels & Distribution Boards

To provide and protect Low Voltage Power Distribution networks from harsh environmental conditions and explosive atmospheres common to the onshore and offshore hazardous area industries please

Expert Guide: Select the Right Temporary Power Distribution Box

Note that successful power distribution management relies on proper safety protocols and maintenance schedules. This complete guide will help you make informed decisions about temporary power

ATEX lighting

Our luminaires are guaranteed by international rules and guidelines, comply with ATEX and IECEx standards, as well as CE, RoHS and REACH marks. Their quality is the result of reliable processes

### Explosion Proof Junction Box Types, Prices

Learn about explosion proof junction boxes—pricing, sizes, certifications, and installation tips for electricians and engineers. Shop certified

### 2025 Explosion Proof Lighting Standards: Compliance Guide

Warom's work on General Paint's electrical safety upgrade in Mexico demonstrated how these evolving explosion proof lighting standards play out in practice. The site required customized

### Ex-Solutions

English Ex-Solutions™ Hazardous Location Lighting A broad range of lighting products for applications ranging from outdoor residential use to harsh industrial environments.

### Latest Explosion Proof Lighting Standards: Key Changes for 2025 ...

This piece examines the latest explosion proof lighting standards and highlights key changes for 2025 compliance. We'll also explore how these updates impact installation requirements in industrial

### Outdoor Electrical Distribution Box Specifications: NEC Article 312

This specification guide provides system designers, electrical engineers, and procurement professionals with the technical criteria needed to select compliant outdoor electrical

### Control and Distribution Panels | Ex d | EJB Series

The enclosures are certified Ex d IIB+H2 and Ex tb as well as "explosion-proof". They are available in many sizes, a wide range of operating elements and monitoring functions can be integrated. They

### Control Panels & Distribution Boards

Control Panels | atex & iecex Explosion Proof & Hazardous Area Zone 1 & Zone 2 Thorne & Derrick International, based in the UK, are the leading designers and

## Contact Us

For more information, pricing, or custom solutions, please contact us:

Website: <https://saastisfy.fr>

Email: [sales@saastisfy.fr](mailto:sales@saastisfy.fr)

Phone: +33 6 52 81 47 39

Address: 75 Rue de Rivoli, 75001 Paris, France

This document is for informational purposes only. Specifications subject to change without notice.

