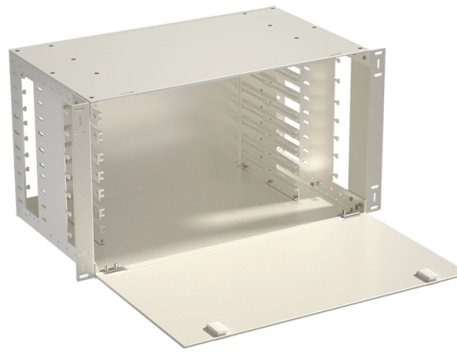


# Managed Switch 2 Fiber Optic 24 Electrical



## Overview

This TCP/IP managed switch has two 100BASE-FX ports for fibre optic and two 10BASE-T/100BASE-TX ports for copper cable. 7W and maximum number of switches in a ring is 50. The SEL-2730M is designed to operate in harsh environments, like those found in electric utility substations and industrial plants. The SEL-2730M. 24-Port L2+ Fiber Optic SFP Managed Switch helps finish central managed optical fiber connectivity conveniently and safely. A standard product features gigabit uplink speed over fiber or Ethernet wiring, easy installation and high security, which gives ease of management and investment protection. Process automation and transportation automation applications combine data, voice, and video, and consequently require high performance and high reliability. The IKS-G6524A Series is equipped with 24 Gigabit Ethernet ports. A switching capacity of 336Gbps has been achieved for the real-time control system of the petrochemical plant. This product offers you a smart and flexible way.



## Article Content

10G uplink 24-port L2+ managed industrial Ethernet switch

L2+ managed industrial Ethernet fiber switch with 20\*10/100/1000M RJ45 ports and 4\*1/10G uplink SFP+ fiber ports. It support dual DC power supply input and DIN

24-Port Managed Gigabit Ethernet Switch, PoE, Layer

New generation of Gigabit Ethernet switch designed for top security and performance. Features 24 auto-negotiating RJ45 PoE ports and dual GbE SFP

24\*10G SFP+ and 2\*100G QFSP Optical Core Switch

WS6024-2QF is a high performance full 10Gb\*24 access and 40/100Gb\*2 core uplink Layer 3 optical switch developed by WayOS with 24\*10Gb SFP+ ports and

network switch, Modicon Networking, managed, 4 ports

Schneider Electric USA. MCSESM063F2CU0 - network switch, Modicon Networking, managed, 4 ports for copper with 2 port for fiber optic, multimode.

Ethernet TCP/IP managed switch

This TCP/IP managed switch has two 1000 SFP ports for fibre optic and eight 10BASE-T/100BASE-TX ports for copper cable. It is a network switch with a supply voltage of 24V, a power

24-Port L2+ Fiber Optic SFP Managed Switch

High Security and Efficiency Layer 2+ managed switch with powerful traffic management and QoS features, offer MAC address filtering and VLAN capabilities as long as static routing feature so you

TCSESM043F2CU0

This TCP/IP managed switch has two 100BASE-FX ports for fibre optic and two 10BASE-T/100BASE-TX ports for copper cable. It is a network switch with a supply voltage of 24V, a power

24-Port GbE PoE+ Web-Managed Switch w/ 2 SFP Ports

Save installation time and money with Power over Ethernet. The Intellinet Network Solutions 24-Port Gigabit Ethernet PoE+ Web-Managed Switch with 2 SFP Ports

Global IT Products & Network Solutions Provider | Black Box

Black Box is a global leader in digital infrastructure solutions, delivering network and system integration, managed services, and technology products to Fortune 100 and top global enterprises.

ICYMI O/N IRAN: US President Trump, speaking after his

trap\_zack (@ZackEiseman). 9 likes 772 views. ICYMI O/N IRAN: US President Trump, speaking after his announcement that he had called off a planned military strike against Iran, said to

24-Port L2+ Gigabit Managed Switch with SFP

Long Distance Optical Fiber Equipped with gigabit SFP slots to realize long distance, high speed fiber optic connection or uplink, ensure quick and smooth

Manufacturer ng 24 Port Industrial Switch 4 Fiber Uplink

JHA-MIG016C08W4-1U na may 4\*10GBase-X, 8\*1000M Combo, 16\*10/100/1000Base-T, pamamahala ng mga pang-industriyang Ethernet switch, na nagbibigay ng mahusay na pang-industriya na kalidad

Optical networks

Nokia optical network solutions for transport networks with advanced coherent optical engines, scalable open optical line systems, and AI-powered automation.

EDS-518E Series

The EDS-518E standalone, compact 18-port managed Ethernet switches have 4 combo Gigabit ports with built-in RJ45 or SFP slots for Gigabit fiber-optic

Best 10Gb Switch of 2026: Tested and Reviewed

In this comprehensive guide, we've tested and reviewed the best 10Gb switches to help you make an informed decision.

Phoenix Contact 2700786 Ethernet Switch, Managed, 16 Port, 24

Phoenix Contact 2989307 Ethernet Switch, Managed, 12 Port, 24 VDC, DIN Rail, FL Switch GHS Series Phoenix Contact 2700270 Parameterization Memory, Plug-In, with MRM Functionality Phoenix

IKS-G6524A Series

Process automation and transportation automation applications combine data, voice, and video, and consequently require high performance and high reliability. The

24-Port L2+ Fiber Optic SFP Managed Switch

24-Port L2+ Fiber Optic SFP Managed Switch helps finish central managed optical fiber connectivity conveniently and safely. A standard product features gigabit

China 2018 Good Quality Managed Network Switch

24+2 Management Gigabit Fiber Ethernet Switch JHA-S2024MG-26BC 24+2 Gigabit Managed Fiber Switch ♦ Product overview: v JHA-S2024MG-26BC Series Gigabit Managed Fiber Switches are

Enterasys A4H124-24FX P0973JN 24-port managed

Enterasys A4H124-24FX P0973JN is a robust and durable 24-port managed fiber optic switch. This Layer 2 + switch combines 24 100/1000BASE-X SFP slots and

### Industrial Ethernet Switches | WAGO

When powered via a managed PoE port, the 24 VDC output can be switched on and off remotely, allowing targeted restarts of decentralized control cabinets to

### 24-Port Fiber Optic SFP Managed Switch with 10G Uplink

24 port Fiber Optic SFP Managed Switch allows you finish fiber connectivity that is with different bandwidth requirements conveniently and cost savings.

### Massive Selection for L2 40g Switch

JHA-MIG024W2-1U na may 2\*10G Base-X, 24\*10/100/1000Base-T, pamamahala ng mga pang-industriyang Ethernet switch, na nagbibigay ng mahusay na kalidad ng industriya tulad ng

### ConneXium Extended Managed Switch

Schneider Electric USA. TCSESM063F2CU1C - ConneXium Extended Managed Switch - 6 ports for copper + 2 ports for fiber optic -multimode - Coated.

## Contact Us

For more information, pricing, or custom solutions, please contact us:

Website: <https://saastisfy.fr>

Email: [sales@saastisfy.fr](mailto:sales@saastisfy.fr)

Phone: +33 6 52 81 47 39

Address: 75 Rue de Rivoli, 75001 Paris, France

This document is for informational purposes only. Specifications subject to change without notice.

