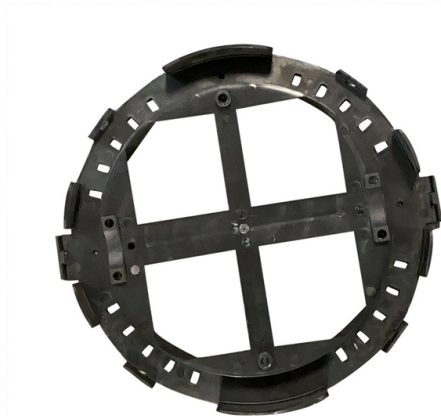


How to open the wiring holes in the distribution box



Overview

Once you have a hole, get a decently sized bit (I find 1/4" works well here in both girth and length), put it into the hole you made, and carefully ream the hole out. The thinner knockouts will put up little resistance, but the main box won't let the bit ream it. A "knock out" or "KO" is a partially stamped opening in electrical enclosures that allows quick entry of a wire, cable or pipe via connector or fitting to the interior. With the right information and technique, you should be able to remove a "KO" from electrical panels and other electrical. A plastic electrical box —sometimes called a PVC junction box —comes with small, thin discs called knockouts. These are designed to be removed so wires can pass through. A stripped screw or screw opening at an electrical box is more than annoying, it's unsafe as the device will not be mounted safely and securely to the. I need to re-wire a receptacle and hope to do it without replacing the box or cutting open the wall. I have what looks like a 1995 Bakelite 20. single gang box with no knockouts, nailed to the stud.



Article Content

on video How to Wire a Home Distribution Box

The above mentioned electrical wiring accessories and protective devices are used to control and distribute electric supply (safely to connected electrical

How to Wire a Home Distribution Box

How to Wire a Home Distribution Box - Step-by-Step | Distribution DB box wiring diagram Welcome to our channel! In this video, we'll walk you through the

Home Distribution DB Box Wiring Connection Diagram | DB box wiring |

Welcome to our channel @Electricalgenius In this video, we'll take you through a detailed step-by-step guide on wiring a home distribution DB (Distribution Board) box.

How to Replace Your Old Junction Box: A Step-by-Step

Replacing an old junction box can be a daunting task, but with the right tools and instructions, you can do it safely and efficiently. Here's a simple,

The Complete Guide to Distribution Box: Installation, Types & More

What's the difference between a distribution box and a sub-panel? A distribution box typically refers to the main electrical panel that receives power from the utility service. A sub-panel is

How to Install a Distribution Box—A Comprehensive

Whether you are an electrical contractor or a construction brigade, knowing how to properly and safely install distribution boxes is the basis of

WORLD WIDE WEB JOURNAL Home

will open to start the export process. The process may take but once it finishes a file will be downloadable from your browser. You may continue to browse the DL while the export process is in

A Step-by-Step Guide to Wiring an Electrical Panel Box

Find out how to properly wire an electrical panel box with a comprehensive diagram and step-by-step instructions.

Distribution Box Wiring Tutorial On Site Installation

Learn how to wire a distribution box step by step! This video shows real on-site footage of electrical installation, demonstrating safe and standardized wiring methods used by...

Single Phase Distribution Box (DB) Wiring Diagram and

Hey, in this article we are going to see the Single Phase Distribution Box Wiring Diagram and Connection Procedure. A distribution board or

How can I bring cable into a junction box with no

Once you have a hole, get a decently sized bit (I find 1/4" works well here in both girth and length), put it into the hole you made, and carefully ream

How to Install a Cable Distribution Box Safely and

In modern electrical systems, cable distribution boxes (also known as electrical distribution boxes or distribution boxes) play a crucial role as the

Size determination, installation method and wiring

The distribution box is the central hub of the home circuit and the general control of our daily power consumption. It is an indispensable electrical equipment. If there

The installation requirements for the distribution box

Learn how to install a distribution box safely and correctly. Covers wiring, placement, standards, and expert tips for a compliant setup.

Electrical box screw / tab repair Stripped broken

Here we describe what to do if the mounting screw itself is stripped and we explain how to tap the electrical box opening if the problem is that that component has become stripped or enlarged.

How To Punch Out Electrical Box

In this article, we'll guide you through the steps to safely and effectively punch out an electrical box. Before we begin, it's

Electric distribution box wiring tutorial (very simple and practical)

In this video, we are going to wire a power distribution box. This small box has an rccb switch that protects the outputs from electric shock and also has a miniature switch that protects the ...

Distribution Box Installation: A Complete Guide to Safe

The distribution box, often referred to as a breaker box, fuse box, or electrical panel, is a critical component of any electrical system. It acts as the central hub for

Distribution Box Wiring Steps

Wiring and Binding Wiring Direction: Wiring between the main circuit breaker and each branch circuit breaker in the box generally goes on the left,

How to Wire a Home Distribution Box

Welcome to our channel! In this video, we'll walk you through the process of wiring a home distribution box with a detailed connection diagram.

How To Knock Out Holes in Plastic Electrical Box

Knocking out a hole in a plastic electrical box is simple—but it rewards patience and finesse. With a steady hand, light pressure, and the right

Electrical Distribution Board Installation & Wiring | Step-by-Step ...

The video starts with selecting the appropriate distribution board based on your electrical needs, followed by proper breaker and connector installation.

How to Build a Pulley (with Pictures)

Pulleys are simple machines that make lifting heavy objects easier. They distribute weight to reduce the amount of force it takes to lift something up.

How to determine the size, installation method and

When the switches are arranged in two rows, the wiring of the switches should be considered. Of course, there is no final conclusion on the size of the electric box.

How to Install a Cable Distribution Box Safely and

By following the guidelines in this article and working with reliable suppliers such as Chuanli, the safety, reliability, and compliance of electrical

Contact Us

For more information, pricing, or custom solutions, please contact us:

Website: <https://saastisfy.fr>

Email: sales@saastisfy.fr

Phone: +33 6 52 81 47 39

Address: 75 Rue de Rivoli, 75001 Paris, France

This document is for informational purposes only. Specifications subject to change without notice.

