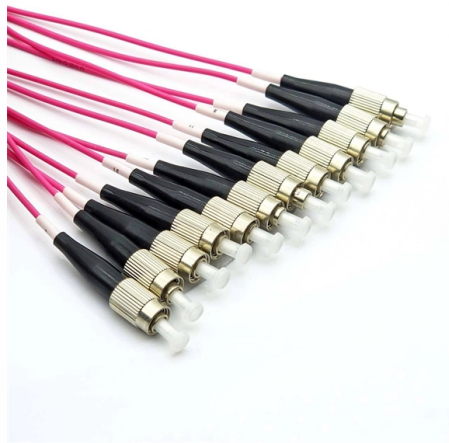


# How to connect a cable tray to an explosion-proof distribution box



## Overview

Use rubber plates to connect the tray to the explosion-proof distribution box, protecting wires and cables. Choosing cables isn't just about voltage ratings - it's about creating passive firebreaks:  $\Delta$  Critical Mistake : Using regular building-grade cables in explosion areas because "they look similar" to certified versions is like using duct tape for electrical repairs - it might look okay but will fail. Let's break down what you need to know about explosion-proof requirements for cable trays in these environments, keeping it simple and clear. The box's cable entry holes should be pre-reserved by the supplier., IEC, NEC, or local safety regulations). For combustible dust locations, type MC cable, with the same requirements as in Class I, Division 1 locations, was added to the wiring methods permitted in. This document is primarily intended for operators and installers of explosion-protected plants. The purpose of this brochure is to help them in the selection of suitable cables and cable entry components, as well as the combination of them which is very important because properties of cables and.



## Article Content

Installation and Wiring of High and Low Voltage Explosion-Proof ...

Connect the tray to the ground bus bar inside the box with a dedicated grounding wire. Use rubber plates to connect the tray to the explosion-proof distribution box, protecting wires and

Walmart | Save Money. Live better.

Shop Walmart today for Every Day Low Prices. Join Walmart+ for unlimited free delivery from your store & free shipping with no order minimum. Start your

Cables and Lines for Hazardous Areas

The purpose of this brochure is to help them in the selection of suitable cables and cable entry components, as well as the combination of them which is very important because properties of

Explosion Proof Electrical Equipment, ATEX Lighting | Supermec

It's cool to be safe Your Electrical & Explosion Proof specialist, and manufacturer of the complete range of ATEX and IECEx compliant Ex-proof electrical equipment for use in Zone 1 and Zone 2, such as

Special requirements for cable laying and distribution box installation ...

It's not just about compliance - it's about creating intrinsically safe systems where cable management and enclosure installation don't just meet standards but exceed them in design

Explosion proof distribution box standards and installation issues ...

I. Explosion-proof distribution box general standards Distribution box production technology indicators to meet the specifications and design requirements, and in accordance with the provisions of the

Installation and Wiring of High and Low Voltage Explosion-Proof ...

Use rubber plates to connect the tray to the explosion-proof distribution box, protecting wires and cables. See the diagram for the connection between the tray and the box.

Full text of "NEW"

Full text of "NEW" See other formats Word . the, > < br to of and a : " in you that i it he is was for - with ) on ( ? his as this ; be at but not have had from will are they -- ! all by if him one your

The "Ex d" type of protection: electrical cable installation

Electrical cable installations are the alternative to the electrical conduit in a metal protective tube to be used in sites where there is a risk of the formation of an

Firestopping Requirements for Cable Trays and

Technical guide to firestopping cable tray and slab penetrations in electrical shafts; specifies materials, packing limits, waterstop heights and

Latest news & breaking headlines | The Times and The

The latest breaking UK, US, world, business and sport news from The Times and The Sunday Times. Go beyond today's headlines with in-depth

How to Install Explosion-Proof Distribution Box

3. Regularly inspect the explosion-proof distribution box for any damage to components. The installation inclination of the distribution box should

Principles for Connecting Explosion-Proof Distribution

Explosion-proof systems, especially in hazardous environments, demand a meticulous approach to ensure safety and compliance with regulations. This

CBS News | Breaking news, top stories & today's latest headlines

CBS News offers breaking news coverage of today's top headlines. Stay informed on the biggest new stories with our balanced, trustworthy reporting.

The Financial Express | First Financial Daily of

Get latest stock share market news, financial news, economy news, politics news, breaking news, Bangladesh economy news at The Financial Express.

Optical Distribution Frame (ODF) in Telecom: Types & Uses

An Optical Distribution Frame (ODF) is a specialized enclosure designed to manage, connect, protect, and distribute fiber optic cables in telecom and data networks.

Think of it as a

How to Wire an Explosion-Proof Distribution Box and

Explosion-proof electrical equipment, such as explosion-proof distribution boxes, is specifically designed for hazardous environments where flammable gases,

Explosion Proof Basics on Installation of I.S. Equipment

Each of the single pair cables is terminated in a piece of field equipment (only one shown). In each field device, the cable screen should be

Installation Guidelines for Explosion-Proof Flexible

Explosion-proof flexible conduits, also known as explosion-proof flexible metal hoses, play a crucial role in hazardous areas where flammable gases, vapors,

## Cable Trays In Hazardous (Classified) Locations | Cable Tray Institute

This cable can be installed in cable trays in Division 1 locations and can also provide fire protection. Cable tray systems must comply with article 318 with respect to ampacity, grounding, fill, spacing and

### Cables and cable glands for hazardous locations

Cable glands (cable entry devices) used in hazardous locations are intended to provide the safe connection of suitable cables to enclosures, maintaining the explosion protection and ingress

### Technical Guidelines for Cable Tray Installation and

Joint Connections: Use dedicated splice plates and bolts. Ensure firm electrical continuity through grounding jumpers at each connection point. Sharp edges or

### Explosion Proof Cable Trays in Chemical Plants

Essential guide to explosion proof Cable Trays in Chemical Plants. Learn about tray zoning, materials, design, installation, & safety for hazardous

### How to Wire an Explosion-Proof Distribution Box and

Proper installation, wiring, and usage are critical to ensuring the safety and functionality of these systems. Below, we will discuss the correct wiring methods

## Contact Us

For more information, pricing, or custom solutions, please contact us:

Website: <https://saastisfy.fr>

Email: [sales@saastisfy.fr](mailto:sales@saastisfy.fr)

Phone: +33 6 52 81 47 39

Address: 75 Rue de Rivoli, 75001 Paris, France

This document is for informational purposes only. Specifications subject to change without notice.

