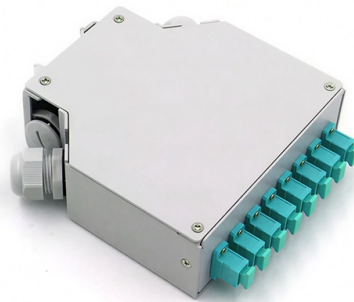


# Fiber Optic Cable Bundle Tube Fiber Gel



## Overview

This universal (outdoor-indoor) gel-filled loose tube fiber optic cable consists of up to 24 fibers in 900 $\mu$  tight or semi-tight buffer tubes that are joined in a gel-free LSZH loose tube. Corning Sensing all-dielectric cables are lightweight cables designed for duct and aerial (lashed) installation. The loose tube design provides stable performance over a wide temperature range and is compatible with any telecommunications-grade optical fiber. Installation is completely stress-free, eliminating the damage that can occur when traditional fiber is pulled through the network. The gel acts as a protective. The “dry” cable design compares favorably with a “wet” design that uses a flooding compound in the voids within the cable core and/or a thixotropic gel within the buffer tube to achieve comparable water blocking performance. They effectively. Thorlabs offers multimode fiber bundles in straight, bifurcated (Y-cable), or fan-out configurations and round or linear bundle end configurations.

## Article Content

### Jelly Filled Cable: The Ultimate 2025 Technical Guide

“Jelly Filled Cable” (also called gel-filled, petrolatum-filled, or thixotropic compound-filled cable) is any loose-tube fiber optic cable in which all

#### FCST022113 Fiber Access Terminal Closure – IP68 FTTX

FCST022113 fiber access terminal closure, IP68 rated, PP+GF material. Supports 24 splice capacity, 4 core branch (SC), gel sealing, wall or pole mount. Ideal for FTTX network termination. Get factory

#### TIGHT-BUFFERED CABLE VS LOOSE TUBE GEL

Tight-buffered/ loose tube are fibre optic cables consisting of multiple fibre counters. Despite similarities their differences outweigh them.

#### CORNING OPTICAL COMMUNICATIONS GENERIC SPECIFICATION FOR GEL

2.0 Fiber Specifications 2.1 Detailed information on the fiber types available for this cable design can be found in the following documents: Dispersion Un-shifted and Non-zero Dispersion Shifted Single

#### Fiber Optic Duct Market Size, Share, and Industry Trends Forecast

Fiber optic duct is a protective conduit system, typically extruded from high-density polyethylene or PVC in diameters ranging from 25 mm to 150 mm, designed to house and shield fiber optic cables from

#### A Comparison of Dry Versus Gel Filled Optical Cables

Table 1 and Figure 1 present a tabular and graphical summary of the times required to clean water blocking gel and SAP from the core, buffer tubes and fibers in a 144-fiber optical cable.

#### Fiber Optic Cable Cost Per Meter for U.S. Buyers 2026

Fiber optic cable cost per meter varies by type (single-mode vs multi-mode), durability, and installation conditions. The main price drivers include cable grade, jacket material, pull tension,

#### Fiber optic cables and their use of gel compounds

While gel-filled cables offer excellent protection, the trend towards dry designs in some applications reflects the industry's focus on easier installation and maintenance. Would you like more

#### Multimode Fiber Bundles

Our stock fiber optic bundles are terminated with SMA905 connectors and are offered with high OH fiber, low OH fiber, and our mid-IR fluoride optical fiber (for

## Tight-Buffered Cable vs. Loose-Tube Gel-Filled Cable

Tight-buffered cable and loose-tube cable are both fiber optic cables that consist of multiple fiber counts inside a single line of fiber cable, for the sake

## Hybrid Cables

CommScope bundles hybrid cabling to your custom specifications, using our high-performance fiber-optic, unshielded twisted pair and coaxial cables.

## How to Choose the Best 8 Core Fiber Optic Cable for Your Network

Discover key factors when buying an 8 core fiber optic cable: types, specs, pricing, and what to look for to ensure reliable, future-proof connectivity.

## Loose Tube Fiber Optic Cable: Gel-Free or Gel

Gel-filled cons The main disadvantage of gel-filled loose tube fiber optic cable is that you have to clean the gel from the fibers which slows down the installation

## Fiber Optic Cables: Which one do you need, Gel-Free or Dry Core?

In general, most loose tube fiber optic cables are available in either Dry-Core (DriKore®) or Gel-Free (EzKore®) constructions. To choose the cable that is right for you, it is essential to

## Optical ground wire

An optical ground wire (also known as an OPGW or, in the IEEE standard, an optical fiber composite overhead ground wire) is a type of cable that is used in overhead power lines.

## Understanding Gel-Filled Loose Tube Fiber Optic

In the world of fiber optic technology, cable design plays a crucial role in determining durability, performance, and suitability for different

## Central Loose Tube Fiber Optic Cable | Gel-Filled | U

This universal (indoor-outdoor) gell-filled loose tube fiber optic cable consists of up to 24 fibers in 900µ tight or semi-tight buffer tubes that are joined in a gel-filled

## Make the Right Decision; Gel-Free or Gel-Fill Loose

Gel-filled tubes prevent the ingress of water by filling the negative space within the tube, essentially blocking the entrance and any flow of water. The gel also

## Fiber Optic Distribution Cable, Indoor/Outdoor Non-Metallic Gel Filled ...

Non-metallic rodent-proof Unitube cable with gel-filled tubes and water-blocked design, making it well suited for indoors on trays and in ducts, and limited outdoor use in ducts.

## Fibre Optic Cable

Construction: Gel filled PBT loose tube with optical fibres, Water-blocking E-glass yarn separator, Rip Cord, and Low Smoke Halogen Free

Notices-When Optical Fiber Filling Gel/Cable Filling Jel

Ensure that the selected Fiber Jel (thixotropic, thermal expansion, etc.) is fully compatible with the cable structure (loose tube filling, cable core

Sensing Loose Tube, Gel-Filled Cables 24 F, Single

The loose tube design provides stable performance over a wide temperature range and is compatible with any telecommunications-grade optical fiber.

ALTOS® Figure-8 Loose Tube, Gel-Free Cable | Corning

Corning ALTOS® figure-8 gel-free cables are self-supporting aerial cables designed for easy and economical one-step installation. The loose tube design provides

Make the Right Decision; Gel-Free or Gel-Fill Loose

Discover the key differences between gel-free and gel-filled loose tubes for fiber optic cables. Make informed decisions for optimal protection against moisture.

Understanding Gel-Filled Loose Tube Fiber Optic

In this blog, we will explore what gel-filled loose tube cables are, how they work, where they're used, their advantages and disadvantages, and how

Central loose tube, single sheathed cable, RP-rodent protected ...

Rodent protected, non-metallic central loose tube cable for up to a maximum of 12 fibers for indoor or outdoor duct installation.

Fiber Optic Patch Cables: The Complete 2026 Buyer's Guide

Confused by LC, SC, MPO, UPC, and APC? This complete fiber optic patch cable guide covers connector types, single-mode vs multimode, insertion loss specs, and how to choose the right

Multi-Loose Tube Fiber Cable

Product Number: FDSL012RG Indoor/Outdoor Riser Loose Tube OS2 12 Fibers Gel Block FX Indoor/Outdoor Loose Tube OS2 12 Fibers OFNR Sub-Units (12F) Gel Black  
Availability: Global

Blowing Head Equipment & Accessories

Sumitomo Electric Lightwave's cable blowing head is used to blow the compact fiber optic bundles through the tube cable on a stream of air or nitrogen gas.

## Contact Us

For more information, pricing, or custom solutions, please contact us:

Website: <https://saastisfy.fr>

Email: [sales@saastisfy.fr](mailto:sales@saastisfy.fr)

Phone: +33 6 52 81 47 39

Address: 75 Rue de Rivoli, 75001 Paris, France

This document is for informational purposes only. Specifications subject to change without notice.

