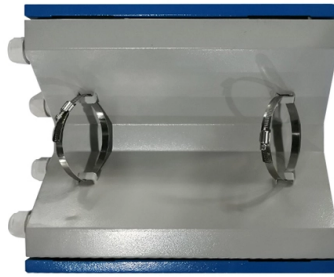


Ethernet Ring Network Fiber Optic Switch



Overview

The Fiber Optic switch is used for designing an Ethernet network in loop topology. On account of the loop structure, the network is fully redundant since, in the case of an fiber rupture, it is possible to still communicate through the other side of the loop. The fiber optic ring redundancy design for industrial Ethernet switches is precisely engineered to address this pain point—achieving millisecond-level fault self-healing through the synergy of physical ring architecture and intelligent protocols, thereby constructing the "self-healing heart" of. What Is a Fiber Optic Ring Network?

A fiber optic ring network is a physical or logical network topology where devices (usually switches) are connected in a closed-loop using fiber optic cables. Each node is connected to two other nodes, forming a ring-like structure. This design ensures data can. The TC3720 10/100M 6-Port Self-Healing Ring Ethernet Switch is a low cost solution for linking multiple RTUs & PLCs in industrial and SCADA fiber optic networks. Cyber-Ring self-healing Ethernet technology is a proprietary developed by ICP DAS that can be used to help establish industrial-grade Ethernet with high reliability and fault-tolerance capabilities, and can be used to implement a ring topology network of either copper or fiber optic cable. Since the fiber optic cable is impervious to electric and magnetic fields, all conventional electrically generated cross talk and interference is. Essentially there were two requirements for what I needed to do: A Bi-Directional technology such as 1000BASE-BX allowing the use of the single core. This is an existing installation, I can't change the following constants: I have approx 100.

Article Content

Fibre Channel

Fibre Channel (FC) is a high-speed data transfer protocol providing in-order, lossless delivery of raw block data. Fibre Channel is primarily used to

Creating a distributed ethernet using a single mode

The ring mandates a spanning tree protocol, limiting the ring width to seven switches. The closest you can get is with small, managed switches

Fibre Optic Switch for Ethernet ring

The Fiber Optic switch is used for designing an Ethernet network in loop topology. On account of the loop structure, the network is fully redundant since, in the case of an fiber rupture, it is possible to still

Advantech EKI-9312-P0ID42E Ethernet Switch,

The EKI-9312P are equipped with 8 Gigabit Ethernet ports and up to 4 fiber optic ports, making them ideal for upgrading an existing network to Gigabit speed or

Gigabit Switch Industrial-Grade Rail Type Ring Network Gigabit 2 ...

No switch capacity 4Gbps place of origin China model number XH-FGYG2D4HW-320C Product Name Industry Ethernet Switch Ports 4 10/100/1000 Ports+2 Fiber port Fiber type single/multi model

Redundancy Protocol Configuration Guide, Cisco

All DLR ring nodes are required to have at least two Ethernet ports and incorporate embedded switch technology. Non-DLR multiport

What is a Fiber Ring & its Advantages

OTN is a standard for optical networks that allows for the transport of multiple types of traffic, including Ethernet, SONET/SDH, and others, over a single fiber ring. It

home > product> solutions > industrial ethernet switch

Cyber-Ring self-healing Ethernet technology is a proprietary developed by ICP DAS that can be used to help establish industrial-grade Ethernet with high reliability

6 Port Gigabit Industrial DIN-Rail Ethernet Switch Ring Network Switch ...

Yes switch capacity 38Gbps place of origin Sichuan, China model number IE2800-6T2F-R Input Power DC12-52V,8-pin terminal block Power Consumption 3W Weight 0.64KG Dimensions (WxDxH)

How Industry Collaboration Fosters NVIDIA Co

NVIDIA is developing a co-packaged optics (CPO) platform that integrates optical and electrical components to improve data-center connectivity,

PROFINET 8 port managed Ethernet to fiber optic

In summary, the EL100-2MA combines advanced features like MRP-based ring function, flexible port configurations, and PROFINET support with a rugged

Cables, Adapters, & Docking Stations: USB4, USB-C,

Cable Matters provides a large selection of innovative cables and accessories, we also educate consumers on the best product offerings. USB4, USB C,

Ethernet Cables Types: Cat 3, 5, 5e, 6, 6a, 7, 8 Wires Explained

This tutorial explains the Definition of ethernet cables, ethernet cable types, shielded cables, and Ethernet cables categories like Cat 3, 5, 5E, 6, 6a, 7, 9 ETC.

AOC, DAC, Fiber Optic Transceivers | One-Stop Shop

Fiber Optical Cable OM3 Duplex OM5 Duplex OS2 Simplex MPO-MPO Extension QSA (40G/100G) SFP+/QSFP Extension Loopback SFP+/SFP28 Loopback

Red Lion Controls NT24K-DC1 Ethernet Switch, Managed, 40 Port, 18

N-Tron Ethernet Series The Red Lion® N-Tron Series NT24k managed industrial Ethernet switch features connectivity for up to 24 Gigabit ports and offers a wide range of connectivity

Fiber-optic communication

Modern fiber-optic communication systems generally include optical transmitters that convert electrical signals into optical signals, optical fiber cables to carry the

Fiber Optic Ring Redundancy Design for Industrial Ethernet Switches

The workshop deploys two independent fiber optic ring networks (Ring A and Ring B), each containing eight USR-ISG-8G industrial switches interconnected over 10 kilometers using 10G single-mode

Multi-Drop Ethernet Fiber Optic Switch

Intended for Self-Healing Ring topologies, the TC3720 Ethernet Fiber Optic Switch interconnects up to six 10/100M devices at each drop.

Differences Between Industrial Ethernet Fiber Optic

To remove the limitation of media failure, Ethernet switches have been used effectively in ring topology installations where long fiber distances and low

Global IT Products & Network Solutions Provider | Black Box

Black Box provides cutting-edge IT solutions and technology products to businesses worldwide, ensuring innovative and reliable services for global digital transformation.

Synchronous optical networking

Synchronous Optical Networking (SONET) and Synchronous Digital Hierarchy (SDH) are standardized protocols that transfer multiple digital bit streams synchronously over optical fiber using lasers or

Fiber Optic Ring Network Design Explained:

Learn how to design a fiber optic ring network with practical diagrams, topologies, and switch setup tips. Explore ring network switch options

Marvell Technology, Inc. | Essential technology, done right

Marvell designs custom silicon tailored for any application and offers the industry's most comprehensive portfolio of interconnects and network switch products.

Legrand AV | C2G | USB-C Docking Stations, HDMI, HDBaseT,

C2G54551 The C2G USB-C Mini Docking Station with HDMI, USB-A, Ethernet and USB-C Power Delivery connects to USB-C or Thunderbolt™ 3 and offers best-in-class video resolutions, supporting

ITPro Today, Network Computing, IoT World Today combine

ITPro Today, Network Computing and IoT World Today have combined with TechTarget . The page you are looking for may no longer exist.

Industrial Ethernet Switch 4 Port 10/100/1000Mbps RJ45 2 SFP Slots ...

Industrial Ethernet Switch 4 Port 10/100/1000Mbps RJ45 2 SFP Slots RS485 Serial Unmanaged Fiber Ring Network Redundancy Switch No reviews yet Shenzhen Dasheng Digital Co., Ltd. Custom

Contact Us

For more information, pricing, or custom solutions, please contact us:

Website: <https://saastisfy.fr>

Email: sales@saastisfy.fr

Phone: +33 6 52 81 47 39

Address: 75 Rue de Rivoli, 75001 Paris, France

This document is for informational purposes only. Specifications subject to change without notice.

