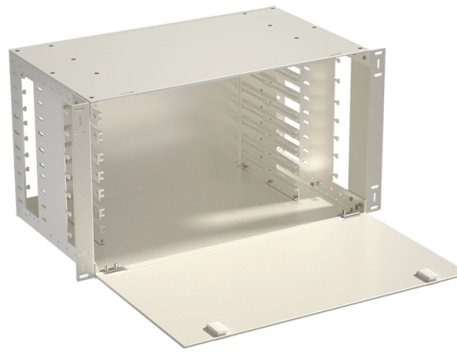


Dimensions and specifications of a 1-meter distribution box



Overview

These are the standard rectangular boxes you often see used for single light switches or electrical outlets in US homes. Their dimensions are generally around 2 inches wide by 4 inches tall, with depths varying from 1-1/2 inches to 3-1/2 inches. Choosing the correct electrical box dimensions is essential for safe wiring, code compliance, and long-term reliability. It includes specifications for TOP-TS, TOP-TF, TOP-LS, TOP-PS, TOP-PF, and TOP-S distribution boxes that range from 1-way to 36-ways. Why different prices?

Which one is mine?

Check rate type We will notify you when it is back in stock. Do you. ABB Mini Center Compact distribution board is the basis for development and growth in meeting all the demands for a successful future in residential, commercial, and infrastructure segments. Actual units use PNP status indicator, NPN status indicator, or neither. Dimensions are shown in mm (in).



Article Content

LOW-VOLTAGE POWER DISTRIBUTION ALPHA BSII 125 & 250A

Choosing the right electrical junction box size is crucial for safety and code compliance in your US projects. This guide helps you determine the

TECHNICAL SPECIFICATION I.R.O. 63,100,160 & 315 KVA

For temperature rise test, a distribution box with all assembly of Isolator / Porcelain cutouts shall be kept in an enclosure such that the temperature outside the box shall be maintained at 50 ° C.

Distribution box catalogue | PDF

This document provides specifications for various distribution boxes including dimensions, mounting sizes, and number of ways. It includes specifications for TOP-TS, TOP-TF, TOP-LS, TOP-PS, TOP

TECHNICAL SPECIFICATION I.R.O. 63,100,160 & 315 KVA

1. SCOPE: This Specification covers the design, manufacture, testing at works and supply of Distribution Boxes made out of CRCA MS for controlling the L.T. feeders from the L.T. side of Distribution

TECHNICAL SPECIFICATION FOR LT DISTRIBUTION BOX

KV 1. DESCRIPTION OF MATERIALS:- The L.T. Distribution Cabinets shall be installed on D.P. Structure for Plinth Mounted 33/.4 KV Substation of the ratings indicated above. These Distribution

Maharashtra State Electricity Distribution Company Limited

For Deep Drawn Box: The general clear dimensions of 63 / 100 KVA Distribution Box shall be 1000 x 1010 x 325 (LXHXW)mm. without considering collar of box. The center height of distribution box on

Fiber Distribution Box

Overview The PPC Fiber Distribution Box is a multi-purpose, robust enclosure made with high-grade industrial plastic. The box can be used as a 16-core splitter enclosure or distribution unit based on

Distribution Boxes Technical Data

DC Micro Style Distribution Boxes Four-pin, One Signal per Port Cable Connector
Distribution Box Eight-port DC Micro Distribution Box Specifications

MATERIAL SPECIFICATIONS CELL

MATERIAL SPECIFICATIONS CELL TECHNICAL SPECIFICATION OF THREE PHASE ENERGY METER BOX SUITABLE FOR AUTOMATIC METER READING (AMR) OF DISTRIBUTION

Microsoft Word

4.1 All pole-mounted service distribution boxes for split prepayment metering shall comply with NRS 032, this specification and the particular requirements specified in schedule A of an enquiry document.

Distribution Boards & Consumer Units

Clear detailed description of each size and easy to select with the ordering codes. Box with four studs and adjustable nuts for easy fit / easy remove of pan assembly. Generous wiring space. Easy fit of

Technical Specifications

11.2 The general overall dimensions of 63 / 100 KVA LT Omni Distribution Box shall be 1200 x 1400 x 275 mm; and 1400 x 1500 x 275 mm for 200 KVA box. The bidder shall submit the exact

Specifications for Electrical Underground Residential Distribution

4.1 The latest edition of all applicable building and safety codes shall be followed in the installation of the electrical underground distribution system. Included, but not limited to, are the:

Maharashtra State Electricity Distribution Company Limited

For Fabrication Box : The general overall clear dimensions of 63 / 100 KVA Distribution Box shall be 1000 x 1010 x 325 (LXHXW)mm. The height of distribution boxes on front side shall be 1010 mm and

Distribution Box Guide: Types, Components & Solutions

Understand distribution boxes (DB boxes) in 5 minutes. Learn about types, components, functions, and uses. Find the perfect DB box for your needs.

Electrical Control Panels & Distribution Boxes: Sizes,

Explore standard panel sizes, applications, and key differences for residential, commercial, and industrial use.

MB1_MB3 Meter Box Specifications | PDF | Building

SRDS - MB1_MB3 Meter Box Specification rev 1_ 214_240418_141830 - Free download as PDF File (.pdf), Text File (.txt) or read online for free. Botswana

Single Phase Distribution Box (DB) Wiring Diagram and

Hey, in this article we are going to see the Single Phase Distribution Box Wiring Diagram and Connection Procedure. A distribution board or

Distribution box | PDF

This document provides specifications for various types of plastic distribution boxes, including their dimensions and features. It describes HA, HK, and LGD series

Requirements And Specifications For Installation Of

In flammable and explosive environments, explosion-proof distribution boxes should be selected and explosion-proof treatment should be carried out.

DRAFT SPECIFICATION FOR L. T. DISTRIBUTION BOX OF

1.1. : CONSTRUCTIONAL FEATURES :- L.T. Distribution Box shall be outdoor type and have suitable enclosure (factory built assembly) manufactured by Thermosetting Plastic i.e. Glass Fiber Reinforced

Electrical Box Dimensions: Find the Right Size for Any

This guide explains standard electrical box dimensions by type, compares common sizes, and helps you select the right box for residential,

Contact Us

For more information, pricing, or custom solutions, please contact us:

Website: <https://saastisfy.fr>

Email: sales@saastisfy.fr

Phone: +33 6 52 81 47 39

Address: 75 Rue de Rivoli, 75001 Paris, France

This document is for informational purposes only. Specifications subject to change without notice.

