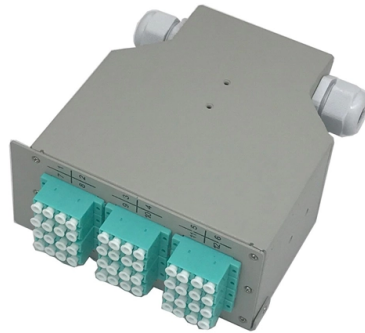


Cable tray clamping and fixing method



Overview

The main cable tray connection methods include splice plates, bolted connections, quick connect systems, fish plates, clamps, and welding. Choosing the right one depends on project conditions, load. Regarding cable management, the fixing and mounting you choose for your cable trays can make or break your setup. Whether you're managing voice, data, or electrical cables, ensuring your trays are installed correctly is essential to keeping everything neat, secure, and functional. But before you lay the first tray or clamp down a single cable, you need a solid plan. This guide breaks down the process step by step. The fittings can be fastened to the cable tray rail either with double clamps of type DOP A2 or with truss-head bolts of type FRS and combination nuts. The exceptions to this are vertical bends, adjustable bend elements and fittings with a side height of 35 mm. During forklift offloading on uneven ground, one must exercise extreme caution to prevent load shifting. Only when completely installed, without damage either to conductors or structural system use maintain spacing or to keep cables in place when the tray is erect the minimum bend radius for cables as they exit the bottom of the cable tray. A rung spacing of 6 to 9 inches (150 to 230 mm) is preferable when.



Article Content

Cable Tray Installation Method Statement

Below is the detailed cable tray installation method statement not only for cable tray but also applicable for GI ladder and trunking for indoor and outdoor applications

Mastering Cable Tray Installation | Step-by-Step Guide for a Seamless ...

Learn how to install cable trays correctly. Get the ultimate step-by-step guide on setting up a seamless and reliable cable management system.

Best practice guide to cable ladder and cable tray

Cable ladder and cable tray systems The following recommendations are intended to be a practical guide to ensure the safe and

Cable Tray Technical Guide A practical guide to product selection and ...

The choice of method should be discussed with a local inspector. The best decision may be to extend only the cables, creating a discontinuity in the cable tray.

BEAMA Best Practice Guide to Cable Ladder & Cable

This document provides guidance on best practices for installing cable ladder and cable tray systems, including channel support systems. It covers topics such as

Cable Tray Installation

Learn everything about cable tray installation with our complete guide. Discover types, steps, and safety tips for efficient electrical cable management.

300mm Cable Tray Hanging & T-Joint Fixing in 60 Sec!# ...

Learn the fastest way to hang & fix a 300mm cable tray T-joint! Perfect for electricians & engineers. ↵ ...more

BS EN 61537 2007 Cable management_ Cable tray

The document outlines the British Standard BS EN 61537:2007 concerning cable management for cable tray and ladder systems, providing guidelines for their

Cable Tray Installation Guidelines | PDF | Galvanization

This document provides details on installing cable trays and their support systems. It includes diagrams showing how to mount cable trays on walls using pre

INSTALLATION GUIDE

Cable or "P" clamps and plastic tie wraps are used to fasten cables/conductors to the ladder tray. Single conductors must be fastened to prevent excessive movement generated by fault current magnetic

Cable Tray Installation Method Statement

This method statement outlines the procedures for installing cable trays, including: 1. Planning preparation such as assigning supervisors, briefing

Cable tray manual

These documents: ANSI/NEMA VE-1, Metal Cable Tray Systems; NEMA VE-2, Cable Tray Installation Guidelines; and NEMA FG-1, Non Metallic Cable Tray Systems, are an excellent industry resource in

Best Practices for Installing Cables in Trays

Quick Installation Checklist (Key Steps) Cable tray cable installation generally follows these steps: Inspect cables before

Cable Tray Technical Guide A practical guide to product selection and ...

Cable Tray Technical Guide A practical guide to product selection and installation This guide for engineers and installers has been developed by ABB as a practical reference regarding cable tray

Best Fixing and Mounting Options for Cable Trays | CMW

Discover the best fixing and mounting options for cable trays and wire mesh basket trays. CMW shares tips for efficient cable management.

INSTALLATION GUIDE

For some tray runs, short lengths of cable may be laid in place without being pulled in. Where cables have to be drawn in, the use of pulling equipment is required.

How to Install Cable Tray: A Comprehensive Guide to Different Cable ...

Welcome to our step-by-step guide on installing cable trays! In this video, we'll explore the different types of cable trays available and provide detailed instructions for their installation.

Cable Tray Installation

Cable Tray Installation - Complete Guide June 11, 2025 How about organizing your wiring with a cable tray system? Smart move. Whether you're building a commercial setup or

A Guide to Installing and Supporting Electrical Cable

This guide covers the critical steps, from selecting the right electrical cable tray and performing accurate cable fill calculations to managing a safe cable pull through

Mounting instructions

Screw-on cable trays with fittings for screwing and clamping Screw-on cable trays with fittings for screwing and clamping Mounting instructions Table of contents

Mounting instructions

The screw-on cable tray systems are used to support and route all kinds of cables, taking the approved load values into account. Depending on the corrosion protection used, they can be mounted both

Connecting Cable Trays: Your Guide to Secure and

Learn common methods for connecting cable trays safely and efficiently. Our guide covers splice plates, quick-connects, and key tips for

Method Statement For Cable Pulling and Final

1. Purpose This Method statement covers the installation and final electrical connections to the MV and LV equipment at any electrical project site. All the

Microsoft Word

Ground clamp styles include bolted lug types that require drilling the cable tray side rail and clamp-on styles that work like a beam clamp. One grounding clamp should be used on each straight section of

Best Practice Guide to Cable Ladder and Cable Tray Systems

This guide covers cable ladder systems, cable tray systems, channel support systems and associated supports intended for the support and accommodation of cables and possibly other electrical

Cable Tray Installation Procedure Guide

It describes inspecting and storing cable trays upon receipt, installing trays flat or vertically, fixing trays to structures, designing trays to carry loads, providing

Cable Tray Supports & Clamps

These special heavy duty tray hold down cable tray clamps and expansion guides are ideal for fastening tray to C-Channels and beams, such as those found on bridges. They are easy to install and reduce

Contact Us

For more information, pricing, or custom solutions, please contact us:

Website: <https://saastisfy.fr>

Email: sales@saastisfy.fr

Phone: +33 6 52 81 47 39

Address: 75 Rue de Rivoli, 75001 Paris, France

This document is for informational purposes only. Specifications subject to change without notice.

