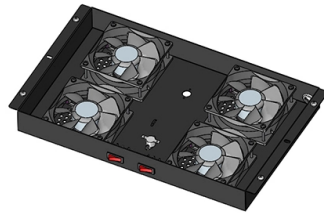


# 8-port switch optical module



## Overview

8 x 10Gbps SFP+ ports, auto-adaptive 1G/10G optical fiber module, Powerful management functions - VLAN, QoS, security, multicast, MAC address table, diagnosis, etc, 160Gbps Bandwidth with non-blocking 10G line speed forwarding, Open SFP slot, Metal case, LED. 8 x 10Gbps SFP+ ports, auto-adaptive 1G/10G optical fiber module, Powerful management functions - VLAN, QoS, security, multicast, MAC address table, diagnosis, etc, 160Gbps Bandwidth with non-blocking 10G line speed forwarding, Open SFP slot, Metal case, LED. Equipped with eight SFP+ ports, two additional SFP28 ports and one RJ45 console port for configuration. With AXIS D8308 Fiber Aggregation Switch you can connect multiple Axis devices using fiber midspans over long distances. \*\*\*No include SFP module\*\*\*\*\* 160Gbps Bandwidth: switching capacity is 160Gbps, Jumbo. Table 9-133 lists the mapping between the ES5D21X08S00 card and software versions. The ES5D21X08S00 provides eight 10GE SFP+ optical ports for data access and line-rate switching. With 8 PON ports and 8 uplink interfaces (copper + SFP), this aggregation switch supports up to 512 ONUs, delivering carrier-grade reliability and. Engineered for high-performance industrial environments, the Hirschmann M4-FAST 8-SFP provides seamless connectivity through its advanced fiber optic interface, ensuring reliable data transmission in demanding conditions.

## Article Content

### Optical 8-Port Selector Switch

The Optical 8-Port Selector Switch (OSW8) maps a common optical port to any of the eight selectable optical ports. With a low insertion loss and steady switching operation, the module allows cost-effective

MokerLink Store

It provides 8\* 1G/10Gbps SFP+ ports with line speed forwarding capability per port. This series of switches provide advanced network management functions: VLAN, QoS, speed control, port image,

### 8 Port Fiber Switch 10/100/1000M RJ45 and 2-port

This switch provides 8-port 10/100/1000M RJ45 and 2-port 1000M SFP fiber ports. Users may need to use different SFP modules, such as 1000Base-T, 1000Base

### CableRack 8 Port SFP Unmanaged Ethernet Optical

About this item Zero configuration and fast deployment of this compact 8 port fiber optic switch, which includes one singlemode 1GB LH SFP and one 1GB SX

### Campus Switches RG-MUX-8LC/LC All-Optical Modular

RG-MUX-8LC/LC 8-Port Transparent Distribution All-Optical Network Passive Device An 8-port transparent distribution device on the building side supports

SFP+, XFP, QSFP+, DAC Twinax Cable 10Gtek Transceivers Co., Ltd

DAC Twinax Cable Maker. CE, FCC, RoHS, ISO9001 Certified. Professional Manufacturer focusing on SFP+ Cables, QSFP+ Cables, MiniSAS Cables, QSFP Cables, XFP Cables, CX4 Infiniband Cables

### Hirschmann M4-FAST 8-SFP: Industrial Ethernet

Featuring 8 SFP module slots, this switch provides flexible connectivity options, supporting both single-mode and multi-mode optical fiber connections. It's ideal

Unlock the Power of Connectivity: Explore the 8 Port

Discover the capabilities of the 8 Port SFP Optical Switch, perfect for expanding your network connectivity with fiber optics and advanced Ethernet

### Campus Switches RG-MUX-8LC/LC All-Optical Modular

An 8-port transparent distribution device on the building side supports both 10 Gbps and 1 Gbps per port, and can accommodate up to 48 ports when fully loaded.

### 8 port Fiber Optic SFP Switch

It allows you to interconnect up to 8 SFP modules of different or similar SFP modules to reach long distance fiber optic link, including SC/LC fiber types. With

8 Port 10Gb SFP+ Web Managed Fiber Switch | Multi

About this item □10Gb Super-Fast Fiber Switch□This 10 gigabit switch features 8 x 10G SFP+ ports and 160Gbps switching capacity, providing higher-speed

EPON OLT 8 Port | High-Capacity Fiber Aggregation

EPON OLT 8 Port - High-performance 1U OLT with 8 PON ports, 8 uplinks, and advanced Layer 2/3 features. Ideal for FTTH/FTTB deployments supporting up to

850nm 1X8 Multimode Optical Switch Module MM/SM

850nm 1X8 Multimode Optical Switch Module MM/SM Fiber Switch The 1x8 multimode optical switch module is a functional device with optical path switching

Cisco Networking for Service Providers

Find the scalable network infrastructure and software solutions to address your challenges with Cisco Networking for service providers.

CableRack 8 Port SFP Unmanaged Ethernet Optical Switch with

CableRack 8 Port SFP Unmanaged Ethernet Optical Switch with One Multimode SFP Convert RJ45 Ethernet to Gigabit Fiber with Zero Setup Use as a stand-alone media converter to

6 to 8 port unmanaged Ethernet to fiber optic switch,

The EL100-2U series includes unmanaged Ethernet switches with 6/7/8 ports designed for 10/100 MBit/s data transfer. These switches provide flexibility with

CS-1008XG - 8 SFP+ 10Gigabit Port Fiber Optical Switch - Cerio

CERIO CS-1008XG is a high-performance 8-port SFP+ 10G fiber switch, offering 8 SFP+ 10Gbps slots. It supports high-speed 10Gbps connections via fiber or copper optical module, making it suitable for

MokerLink 8 Port 10G SFP+ Unmanaged Fiber Switch, 1G/10G

The 10GS080 is a 8 ports unmanaged Switch. 8 SFP+ ports provide either 1G and 10G fiber connectivity, Open sfp slot support SR/LR/LRM/ER/ZR and other models. Each port automatically

Fiber Optic Network Switches | Ethernet to Fiber

VERSITRON manufactures a wide range of fiber optic switches that provide links for your 10Base, 100Base, 1000Base Gigabit, and 10 Gigabit networks

Mixed-signal and digital signal processing ICs | Analog

Analog Devices is global leader in the design and manufacturing of analog, mixed signal, and DSP integrated circuits to help solve the toughest engineering

ES5D21X08S00 (8-Port 10GE SFP+ Rear Optical Interface Card)

The ES5D21X08S00 provides eight 10GE SFP+ optical ports for data access and line-rate switching. The ES5D21X08S00 can be installed in a rear card slot of the switch models listed in Table 9-134.

AXIS D8308 Fiber Aggregation Switch

Equipped with eight SFP+ ports, two additional SFP28 ports and one RJ45 console port for configuration. Scalable and flexible With AXIS D8308 Fiber Aggregation

8 Port 10/100Base-Fx optical fiber ethernet switch, | Home

AN-208-X3X1 is an Optical fiber switch that offers 8 port 10/100Base-FX. It supports both Single optical fiber and dual optical fiber, its transmission distance ranges

AXIS D8308 Fiber Aggregation Switch | Axis

Developed for long distance fiber installations. Equipped with eight SFP+ ports, two additional SFP28 ports and one RJ45 console port for configuration. With AXIS

Fiber Optic Ethernet Switch with 2 Fiber Ports & 8 UTP

2 Fiber Port + 8 LAN Port Fiber Optic Ethernet Switch – FAQ What is a 2 fiber port 8 LAN port fiber optic Ethernet switch? It is a hybrid Ethernet switch that integrates

How to use Ubiquiti SFP ports for fiber optic connections

Extend your network with fiber using SFP ports on UniFi gear. Learn how to choose modules, avoid pitfalls, and set up fast, reliable fiber links.

## Contact Us

For more information, pricing, or custom solutions, please contact us:

Website: <https://saastisfy.fr>

Email: [sales@saastisfy.fr](mailto:sales@saastisfy.fr)

Phone: +33 6 52 81 47 39

Address: 75 Rue de Rivoli, 75001 Paris, France

This document is for informational purposes only. Specifications subject to change without notice.

